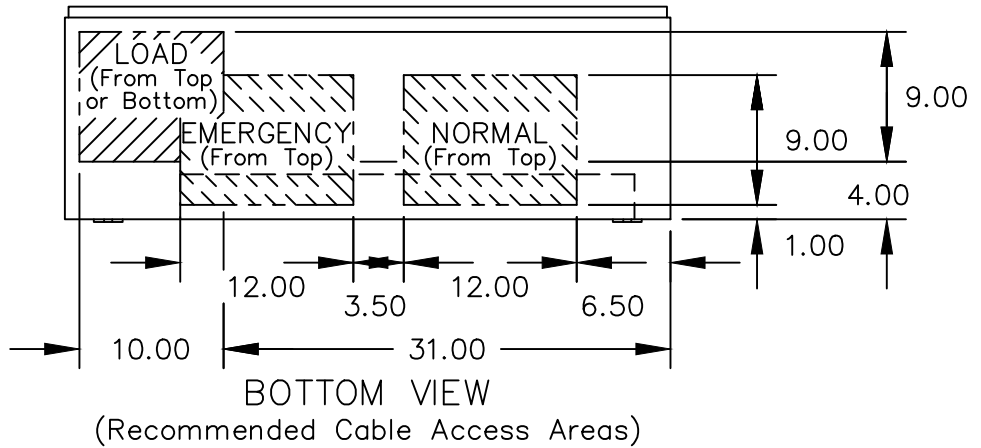
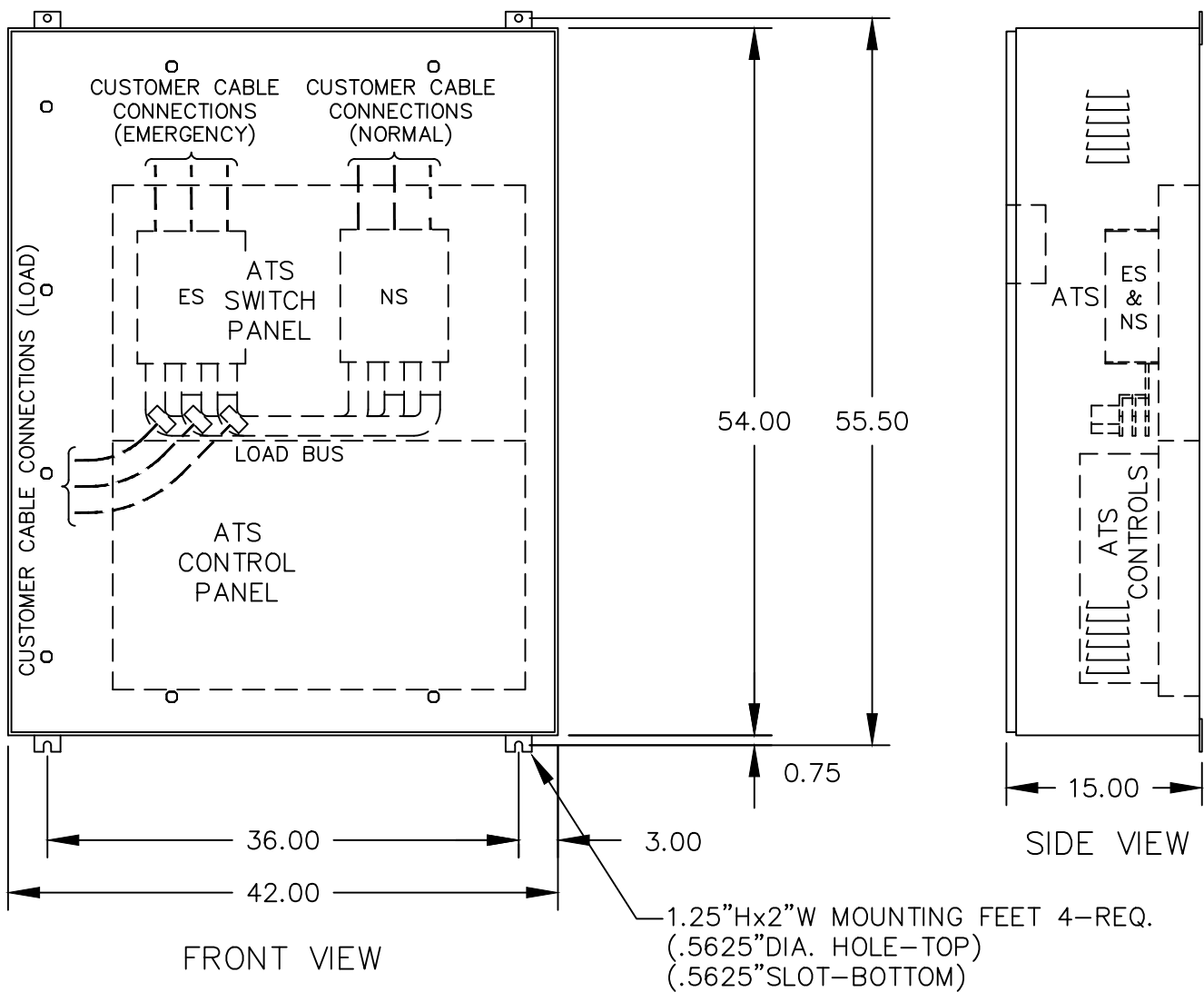



OUTLINE NOTES

- 1) GENERAL ENCLOSURE CONSTRUCTION:
  - A) WALL-MOUNTED
  - B) 14 GA. STAINLESS STEEL
  - C) 1 HINGED FRONT DOOR
  - D) MOUNTING DIMENSIONS ARE  $\pm .0625"$ , ALL OTHER DIMENSIONS ARE APPROXIMATE
  
- 2) NEMA 4X ENCLOSURE
  - A) PADLOCKABLE HANDLE
  - B) ALL SEAMS ARE CONTINUOUSLY WELDED
  - C) ALL REMOVABLE PANELS, PLATES, DOORS & DOOR MOUNTED EQUIPMENT ARE GASKETED
  
- 3) ENCLOSURE FINISH:
  - A) BRUSHED STAINLESS STEEL



-	-	-	-	-
-	-	-	-	-
-	-	-	-	-
REV	DESCRIPTION	BY	APV	DATE
 <b>LAKE SHORE ELECTRIC Corp</b> BEDFORD, OHIO U.S.A.				
FPL230600 I ATS 600A 3P 3Ø 4W 120/240V				
SCALE: -	DRN: - - - / - - / - -	CHK: - - - / - - / - -	APV: - - - / - - / - -	
THIS DOCUMENT IS THE PROPERTY OF Lake Shore Electric Corporation. UNDER COPYRIGHT LAW, DISTRIBUTION AND REPRODUCTION OF THIS DOCUMENT, IN WHOLE OR IN PART, IS PROHIBITED WITHOUT PRIOR WRITTEN PERMISSION FROM Lake Shore Electric Corporation.				
PROJ: M & S NUMBER: 0-283-407-930				
CUSTOMER: FLORIDA POWER AND LIGHT COMPANY		DWG NUMBER: 1X1-XXXX-02		-
QUOTE/JOB#:		PG 1 OF 1		