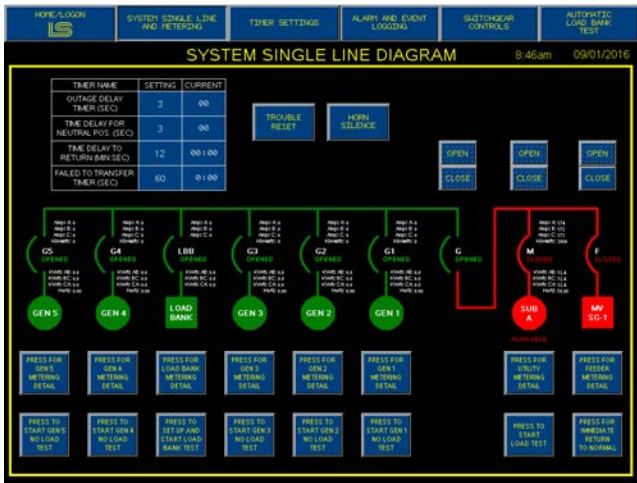


## Advanced Control System

### Endless Options of Controls and Data at Your Fingertips

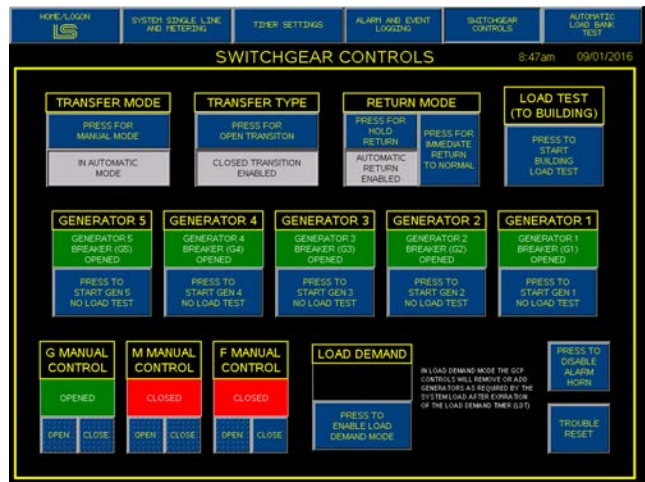
- Interactive Single Lines - Switchgear Controls - Generator Controls - Breaker Controls - Alarm and Event History - Automatic Exerciser - Metering Information - Timer Adjustments
- Automatic Load Shedding - Security - Protection - Engine Monitoring - Load Bank - Custom Screen Designs for All Applications



## Interactive Single Line

(Showing Standby Generator Application)

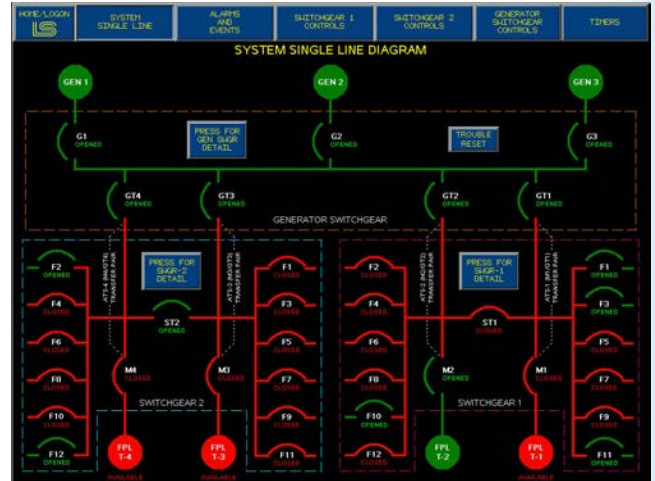
## Switchgear Controls



## Alarms and Event History



## Single Line (Showing Main-Tie-Main Application)



| TIMERS  |   | 10:22am 05/09/2011   |   |
|---|---|--|---|
| <b>ATS-1</b><br>M1 / GT1<br>TRANSFER PAIR                   | <b>ATS-2</b><br>M2 / GT2<br>TRANSFER PAIR                   | <b>SWITCHGEAR 1</b>  | <b>ATS-3</b><br>M3 / GT3<br>TRANSFER PAIR                   |
| OUTAGE DELAY<br>TIMER (ODT)<br>(0-10 SECONDS)               | OUTAGE DELAY<br>TIMER (ODT)<br>(0-10 SECONDS)               | COMPLETE UTILITY<br>FAIL TIMER (M3 & M4)<br>(0-10 SECONDS) | OUTAGE DELAY<br>TIMER (ODT)<br>(0-10 SECONDS)               |
| 3 00  | 3 00  | 3 00   | 3 00  |
| TIME DELAY TO<br>RETURN (DDR)<br>(0-60 MINUTES)             | TIME DELAY TO<br>RETURN (DDR)<br>(0-60 MINUTES)             | CLOSE STATION TIE 1<br>TIMER (CT1)<br>(0-10 SECONDS)       | TIME DELAY TO<br>RETURN (DDR)<br>(0-60 MINUTES)             |
| 12 00:45  | 12 00:42  | 3 00   | 12 00:00  |
| TIME DELAY FOR<br>NEUTRAL POS. (TDN)<br>(0-20 SECONDS)      | TIME DELAY FOR<br>NEUTRAL POS. (TDN)<br>(0-20 SECONDS)      | <b>SWITCHGEAR 2</b>  | TIME DELAY FOR<br>NEUTRAL POS. (TDN)<br>(0-20 SECONDS)      |
| 3 00  | 3 00  |  | 3 00  |
| FAILED TO TRANSFER<br>TIMER FOR GT (FTT)<br>(0-180 SECONDS) | FAILED TO TRANSFER<br>TIMER FOR GT (FTT)<br>(0-180 SECONDS) | COMPLETE UTILITY<br>FAIL TIMER (M3 & M4)<br>(0-10 SECONDS) | FAILED TO TRANSFER<br>TIMER FOR GT (FTT)<br>(0-180 SECONDS) |
| 60 01:00  | 60 01:00  | 3 00   | 60 01:00  |
| RETURN TO NORMAL<br>BYPASS TIMER (RBT)<br>(0-180 SECONDS)   | RETURN TO NORMAL<br>BYPASS TIMER (RBT)<br>(0-180 SECONDS)   | CLOSE STATION TIE 2<br>TIMER (CT2)<br>(0-10 SECONDS)       | RETURN TO NORMAL<br>BYPASS TIMER (RBT)<br>(0-180 SECONDS)   |
| 10 01:00  | 10 01:00  | 3 00   | 10 01:00  |
| <b>GENERATOR SWITCHGEAR</b>                                 |   |  |   |
| LONG DEMAND<br>TIMER (LDT)<br>(0-120 MINUTES)               |   |  |   |
| 30 00:00  |   |  |   |
| <b>ALARM HORN</b>   |   |  |   |
| ALARM HORN DISABLE<br>TIMER (AHD)<br>(0-120 MINUTES)        |   |  |   |
| 5 00:00   |   |  |   |
| PRESS TO ENABLE<br>AUTOMATIC HORN<br>SILENCE TIMER          |   |  |   |
| TROUBLE<br>RESET  |   |  |   |
| RESET TIMERS<br>TO FACTORY<br>DEFAULTS                      |   |  |   |

## Timer Adjustment

## Automatic Exerciser

**EXERCISER SET UP** CLOSE PANEL

PRESS TO ENABLE EXERCISER

EXERCISE INTERVAL: EVERY 2 WEEK(S)

EXERCISE DURATION (1-600) 60 MINUTE(S)

EXERCISE START HOUR (0-23) 22

EXERCISE START MINUTE (0-59) 30

EXERCISE DAY OF WEEK SATURDAY

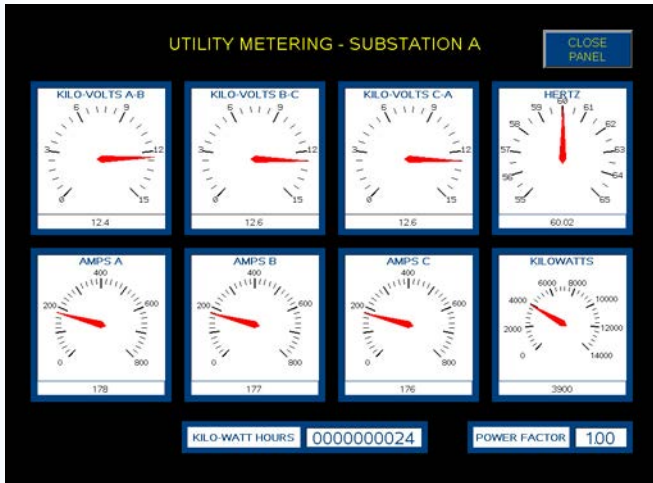
---

**CPU REAL TIME CLOCK**

PRESS TO ADJUST CPU CLOCK

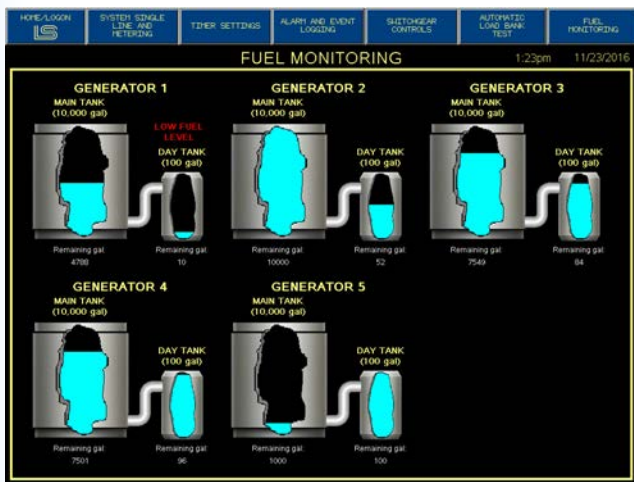
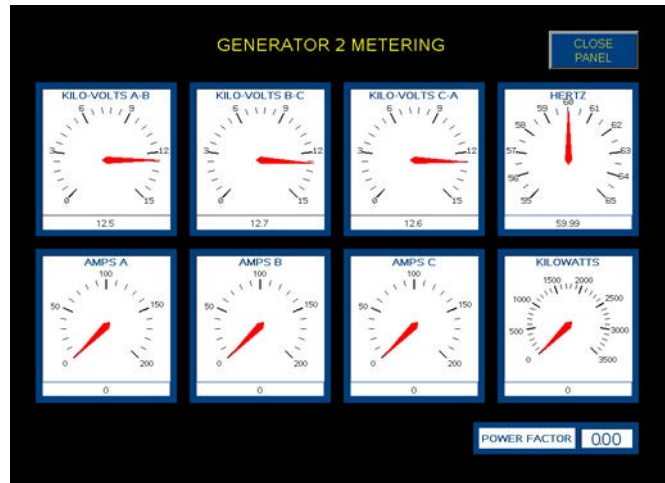
**MONDAY 07/18/2011 11:03:54**





## Utility Metering

## Generator Metering

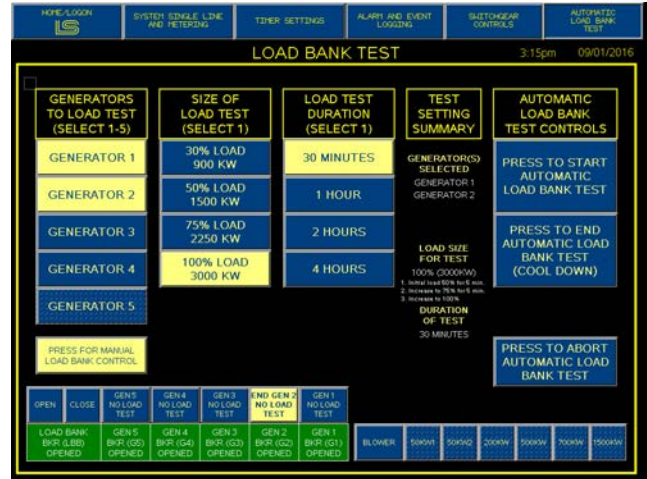


## Engine Parameters (Showing Fuel Monitoring)



## Load Bank Controls

(Manual or Automatic Testing)



## Security Logon

(Configurable for Multiple Levels)

## IO Summary Screen

(Real Time PLC I/O Monitoring)

