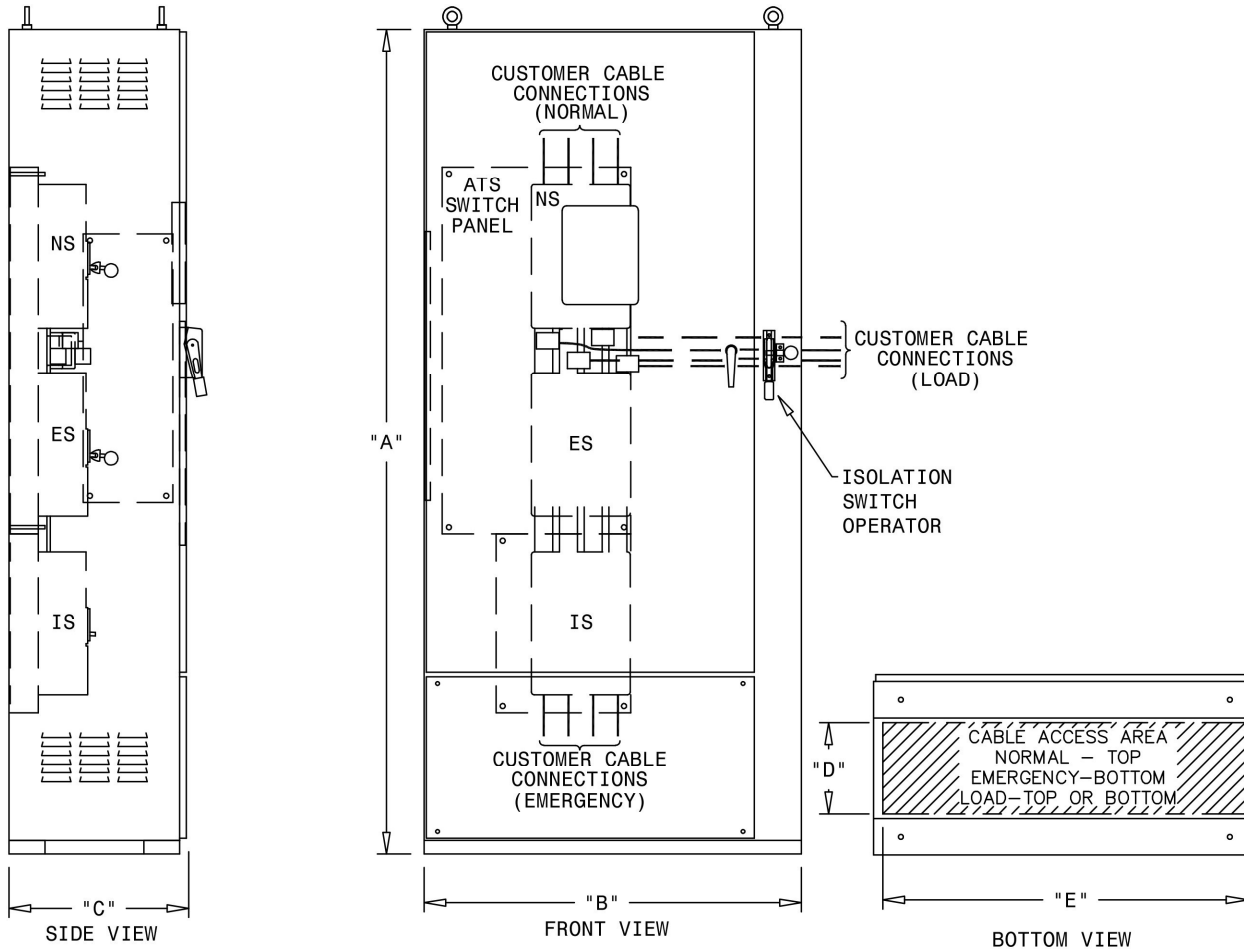


Transfer: FP Series



Dimensions

Amp	A	B	C	D	E	Weight
225	70	33	18	8	31	525 lbs
400	70	33	18	8	31	525 lbs
600	92	42	20	10	40	725 lbs
800	92	42	20	10	40	725 lbs

* All dimensions are in inches.

Power Cable Terminals

Amp	Lugs Per Phase	Lug Range	Optional Lug Range
225	1	(2) 3/0-250 MCM	(2) 3/0-250 MCM
400	1	(1) 500-600 MCM	(1) 500-600 MCM
600	2	(2) 3/0-350 MCM	(2) 3/0-350 MCM
800	3	(1) 500-750 MCM	(1) 500-750 MCM

Contact Information

P: 800.225.0141
 F: 440.232.5644
 sales@lake-shore-electric.com
 www.lake-shore-electric.com

Global Headquarters

Lake Shore Electric
 205 Willis Street
 Bedford, OH 44146
 Publication No. BR0100400E / V1.03.25.20



Transfer



Transfer: FP Series

Description

Lake Shore Electric's FP Series automatic transfer switch is designed to meet the UL 1008 and NFPA 20 requirements for use in a fire pump application. The transfer switch comes standard with the NFPA 20 required isolation switch ahead of the alternate source input along with the required audible and auxiliary contacts for switch position. The isolation switch can be locked into an open and closed position. All FP Series switches are designed with industry proven molded case switches to perform safe transfers under load. The molded case switches leave the factory with a fixed instantaneous setting, which eliminates the need to coordinate with specific breakers or fuse upstream to accomplish a desired short circuit rating. The FP Series is available in ampacities ranging from 225-800 amp. Configurations are also available for service entrance.

Core Features

- UL 1008 Listed
- 100% Rated to 600V, in two-, three-, or four-pole configurations
- Isolation Switch
 - Visual Indication
 - Audible Alarm
 - Lockable
 - Aux Contacts for Remote Annunciation
- Fixed Instantaneous Protection
- Permanently affixed handle allows for safe manual operation under full load
- Open Delay Transition
- Lake Shore 7650 Programmable Microprocessor Controller with Keypad and LCD Display
- Free Standing NEMA 3R Enclosure
- Indicating LEDs for Switch Position
- Front Accessible
- Auxillary Contacts for Switch Position, System Trouble and Engine Start

Related Products



UL 891 Switchboard



Quick Connect Cabinet



IC Series Transfer Switch



MC Series Transfer Switch

Optional Features

- Overcurrent Protection (1)
- Preferred Source Selector/Dual Prime
- Stainless Steel Enclosures
- Metering
- Remote Communication
- Expandable IO & Analog

(1) NFPA requirement when alternate source is utility or a generator that is larger than 225% of the fire pump motors FLA.

Transfer