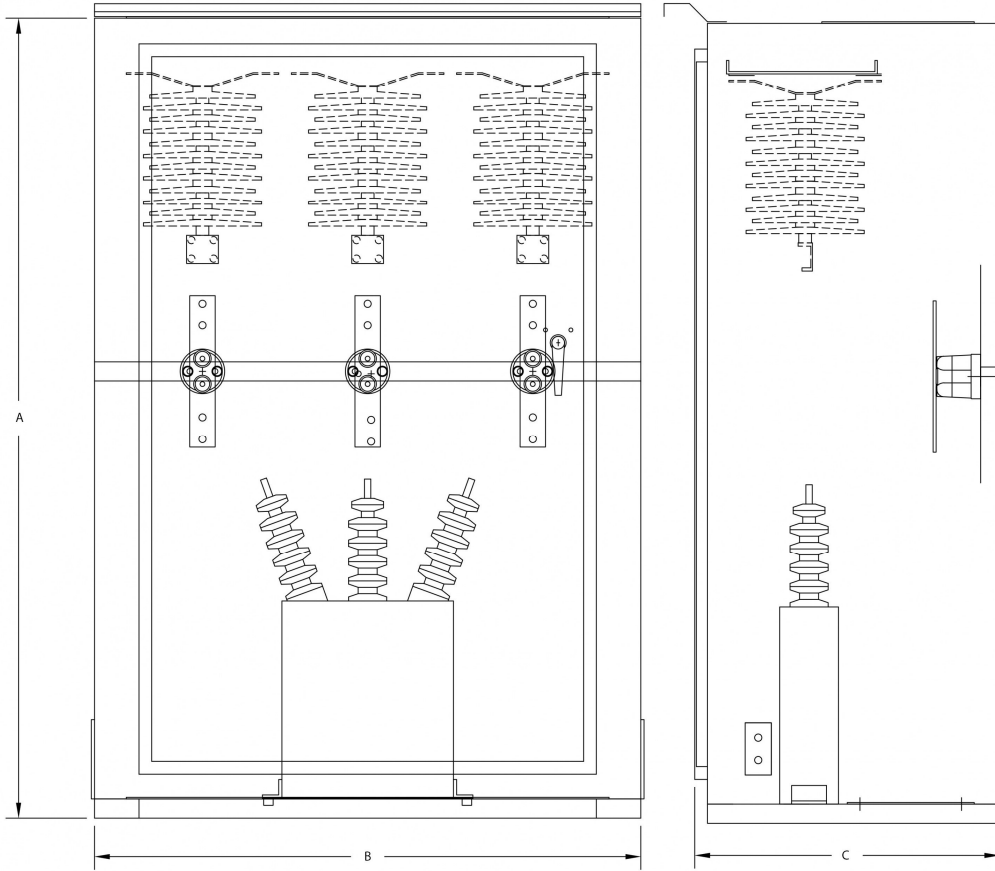
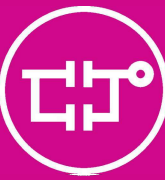


# Control: Generator Surge Protector



## Dimensions

### GROUNDED NEUTRAL SYSTEM (STANDARD PART NUMBERS)

Voltage Rating Volts	Model Number	Arrester Rating KV RMS	Arrester MCOV KV RMS	Capacitor Microfarads Per Pole	A	B	C
4160	60G4160	3.00	2.55	0.50	52	42	23
13800	60G13800	12.00	10.20	0.25	52	43	36
24000	60G24000	21.00	17.00	0.125	52	43	36

### UNGROUND NEUTRAL SYSTEM (STANDARD PART NUMBERS)

Voltage Rating Volts	Model Number	Arrester Rating KV RMS	Arrester MCOV KV RMS	Capacitor Microfarads Per Pole	A	B	C
2400	60F2400	3.00	2.55	0.50	52	42	23
4160	60F4160	6.00	5.10	0.50	52	43	23
4800	60F4800	6.00	5.10	0.50	52	43	36
6900	60F6900	8.50	6.90	0.50	52	43	36
7200	60F7200	9.00	7.85	0.50	52	43	36
13800	60F13800	18.00	15.30	0.25	52	43	36
24000	60F2400	30.00	24.40	0.125	52	43	36



#### Global Headquarters

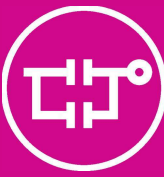
Lake Shore Electric  
205 Willis Street  
Bedford, OH 44146

Publication No. BR0200400E / V1.03.25.20

#### Contact Information

P: 800.225.0141  
F: 440.232.5644  
sales@lake-shore-electric.com  
www.lake-shore-electric.com

Control



## Control: Generator Surge Protector

### Description

Lake Shore Electric Generator Surge Protectors (GSP) provide surge protection for Medium Voltage rotating machines operating at voltages from 2400 VAC to 24,000 VAC.

The GSP integrates the combination of a station class arrester with a protective capacitor to limit voltage peaks which can commonly stress the generator beyond its impulse rating. The arrester helps protect the generator insulation by limiting the amplitude of applied impulse waves or reflections within the machine windings, shunting these high voltages to ground. The protective capacitors reduce the slope of the voltage peak by shunting the high rate of voltage change, (dv/dt), to ground.

It has been shown that the protection of rotating machinery from over voltage conditions has resulted in increased reliability and decreased downtime.

### Standard Features

- NEMA 3R Enclosures
- Suitable for Indoor & Outdoor Applications
- Includes Station Class Arrester to Shunt High Voltage to Ground
- Includes Protective Capacitor to Shunt the High Rate of Voltage Change, (dv/dt), to Ground
- All cabinets feature 100% rated Copper Bus
- Lockable Door Handle

### Related Models



VB Transfer Switch



MC Auto Transfer Switch



Medium Voltage Load Interrupter Switch



Quick Connect Cabinet