

Automatic Transfer Switch Option Battery Charger System 12Vdc

Introduction

This option provides a 12Vdc battery and charger kit for the MP7650 processor controls installed into a molded case ATS.

It will automatically fix the transfer switch code to "M" for the DC voltage. Please refer to the transfer switches' schematic for unit specific reference.

Product Description for Microprocessor Controls (Option BC)

For this option, custom wiring is added to the ATS to include a 12 Volt, 7AH (Amp-Hours) battery to power the microprocessor controls. This will also include a battery charger to keep the equipment running continuously.

See Figure 1 for general wiring of the battery charger system.

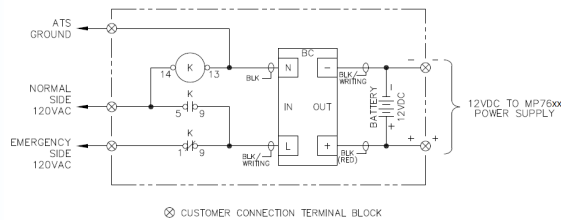


Figure 1

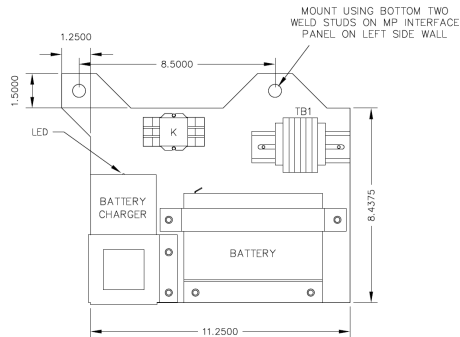


Figure 2

Recommendations

The general operating battery life is approximately two years before replacement is recommended.

Lake Shore Electric Corporation believes in providing the customer with a full turnkey solution to their needs. If the equipment does not fully meet your needs, please consult the factory for further information.

Product Specifications

BATTERY INFORMATION	
Nominal Voltage	12 volts, (6 cells)
Nominal Capacity	20-hr. (350mA to 10.50 volts), 7.00 AH
Energy Density (20-hr. rate)	1.49 W-h/in ³ (90.95 W-h/l)
Specific Energy (20-hr. rate)	17.50 W-h/lb. (38.58 W-h/kg)
Internal Resistance (approx.)	23 milliohms
Max Discharge Current (7 Min.)	21.0 amperes
Max Short-Duration Discharge Current (10 Sec.)	70.0 amperes
Battery Shelf Life (% of nominal capacity at 68°F (20°C))	1 Month, 97% 3 Months, 91% 6 Months, 83%
Ambient Temperature: Operating	Charge: -20°C to 50°C [-4°F to 122°F] Discharge: -40°C to 60°C [-40°F to 140°F]
CHARGER INFORMATION	
Overload Protection	<3A
Short Circuit Protection	Within 5 sec.
Reversed Polarity Protection	Prohibit
Ambient Temperature: Operating	0°C to +40°C [32°F to 104°F]
Ambient Temperature: Storage	-30°C to +85°C [-22°F to 185°F]
Operating Relative Humidity	8% to 90%
Storage Relative Humidity	5% to 95%
Indicator Status: Green LED On	Empty Load or Float Charge
Indicator Status: Red LED On	Bulk Charge
GENERAL EQUIPMENT INFORMATION	
Weight	Approx. 11.7 lbs.
Warranty	1 year
Industrial Control Equipment	UL 1008 Listed
Dimensions (W x H x D)*	12 1/2" x 10" x 3" *
Mounting Holes (w)*	8 1/2" apart, diameter 9/16" hole

* Reference Figure 2.

Order Guide

Part Number Examples:

- MCDA30400CMSA/BC - Molded Case ATS, 3 pole, 400 Amp, 277/480Vac, 12Vdc Microprocessor Controls, 35kAIC @ 480Vac, NEMA 1 Wall Mount Enclosure with Option BC.
- 70LSEBA9907047 - When ordering the battery charger option by itself for field installation into existing unit.