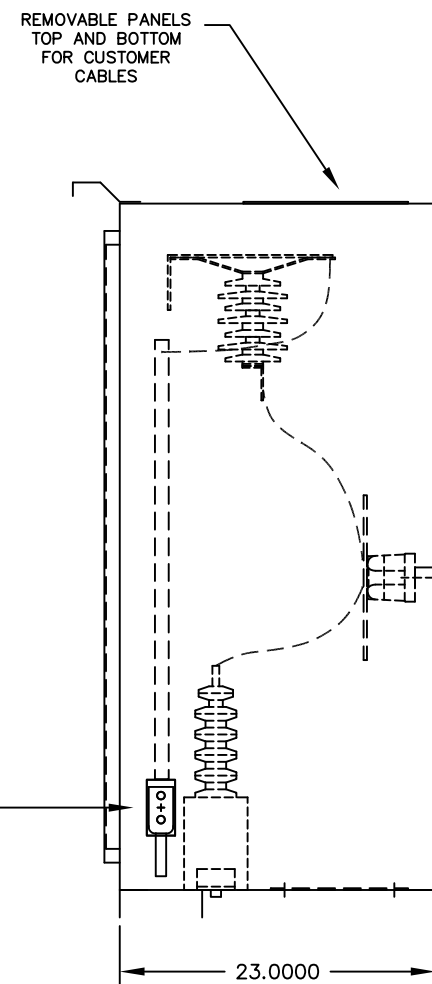
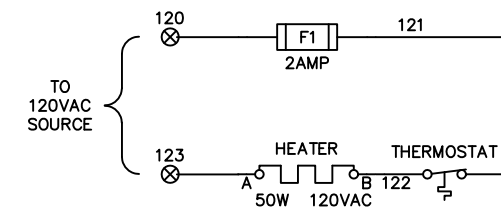
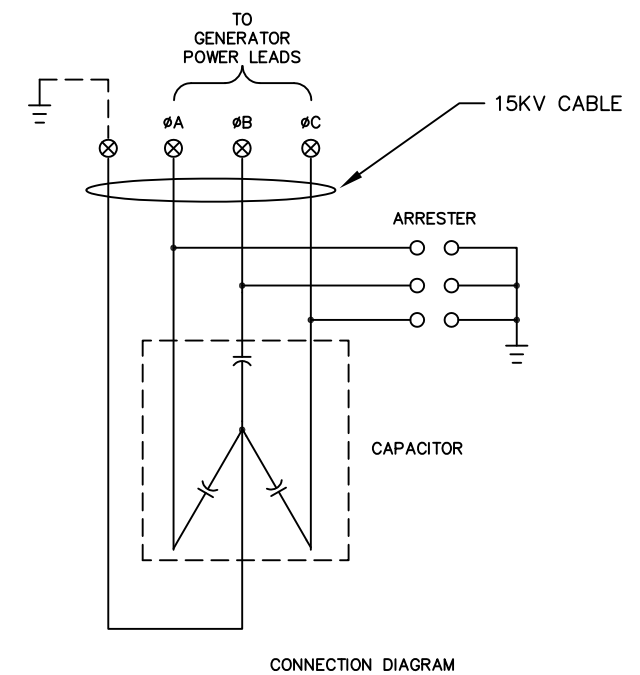


FRONT VIEW



SIDE VIEW



OUTLINE NOTES

- 1) SPECIFICATIONS:
  - A) SURGE PROTECTOR IS FOR USE WITH
    - (1) GENERATOR SET AT 4160 VAC 3PHASE LINE TO LINE WITH GROUNDED NEUTRAL.
  - B) NOMENCLATURE DISCRIPTIONS, IF NOT ON THIS DRAWING (REFER TO LAKE SHORE STANDARD NOMENCLATURE.
  - C) \* = CUSTOMER SUPPLIED EQUIPMENT.
- 2) ENCLOSURE CONSTRUCTION:
  - A) NEMA 3R, FREE-STANDING, 11 GA. SHEET METAL WITH 1.5"x4" 7 GA. CHANNEL BASE.
  - B) (1) HINGED FRONT DOOR AND (2) REMOVABLE PANEL(S) IN TOP AND BOTTOM.
  - C) MOUNTING DIMENSIONS ARE ±.125" ALL OTHER DIMENSIONS ARE APPROXIMATE.
- 3) ENCLOSURE FINISH:
  - A) PRIMED AND PAINTED ANSI-61 LIGHT GRAY.

		LAKE SHORE ELECTRIC CORPORATION	
		Bedford, Ohio U.S.A.	
SCALE	.1=1	REVISIONS	BY DATE
DATE	040199		
DR'N	DJA	CK'D	
AP'VD		1) ADDED CABLE RATING	DJA 040901
TITLE	GENERATOR SURGE PROTECTOR OUTLINE		NO. 60F4160

CUSTOMER