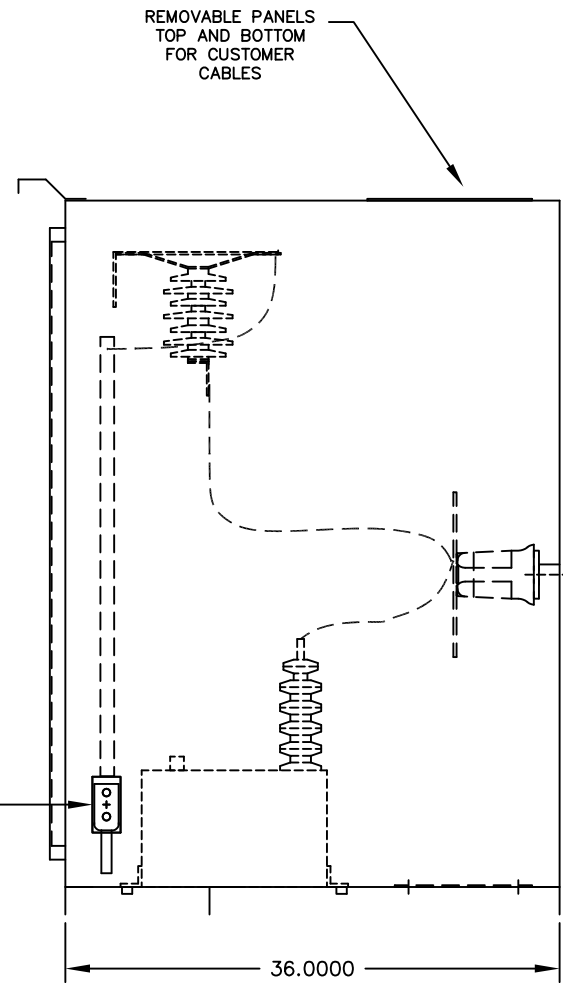


FRONT VIEW



SIDE VIEW

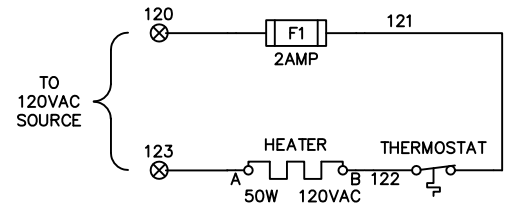
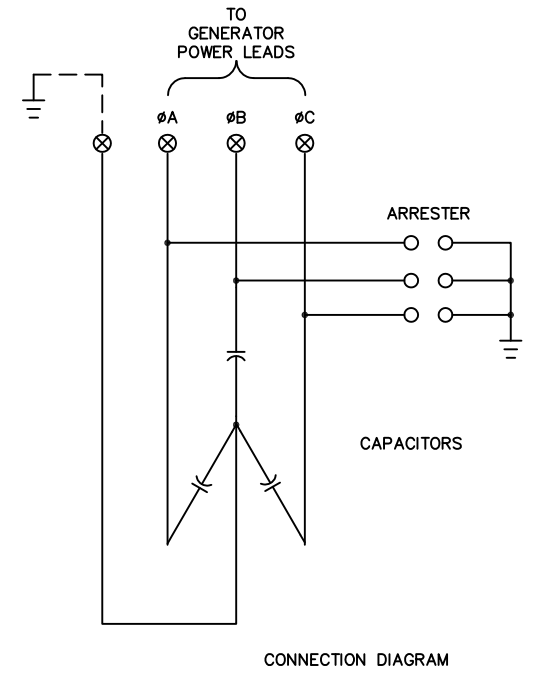
NEMA 2 HOLE PATTERN FOR CUSTOMER CABLE CONNECTIONS FROM TOP OR BOTTOM

COPPER GROUND PAD ON EACH SIDE WITH GROUND LUGS.

REMOVABLE PANELS TOP AND BOTTOM FOR CUSTOMER CABLES

OUTLINE NOTES

- 1) SPECIFICATIONS:
 - A) SURGE PROTECTOR IS FOR USE WITH
 - (1) GENERATOR SET AT 13800 VAC 3PHASE LINE TO LINE. WITH GROUNDED NEUTRAL.
 - B) NOMENCLATURE DISCRIPTIONS, IF NOT ON THIS DRAWING (REFER TO LAKE SHORE STANDARD NOMENCLATURE.
 - C) * = CUSTOMER SUPPLIED EQUIPMENT.
- 2) ENCLOSURE CONSTRUCTION:
 - A) NEMA 3R, FREE-STANDING, 11 GA. SHEET METAL WITH 1.5"x4" 7 GA. CHANNEL BASE.
 - B) (1) HINGED FRONT DOOR AND (2) REMOVABLE PANEL(S) IN TOP AND BOTTOM.
 - C) MOUNTING DIMENSIONS ARE ±.125" ALL OTHER DIMENSIONS ARE APPROXIMATE.
- 3) ENCLOSURE FINISH:
 - A) PRIMED AND PAINTED ANSI-61 LIGHT GRAY.



CUSTOMER

		LAKE SHORE ELECTRIC CORPORATION Bedford, Ohio U.S.A.	
		SCALE .1=1	REVISIONS
DATE 040199			
DR'N DJA	CK'D		
AP'VD			
TITLE GENERATOR SURGE PROTECTOR OUTLINE			NO. 60G13800