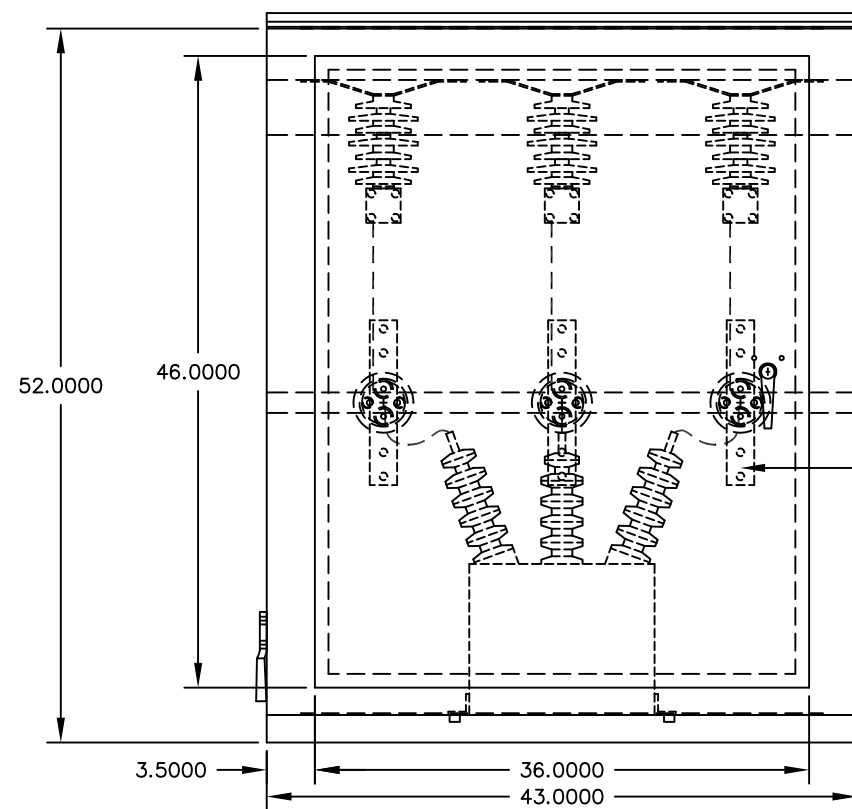
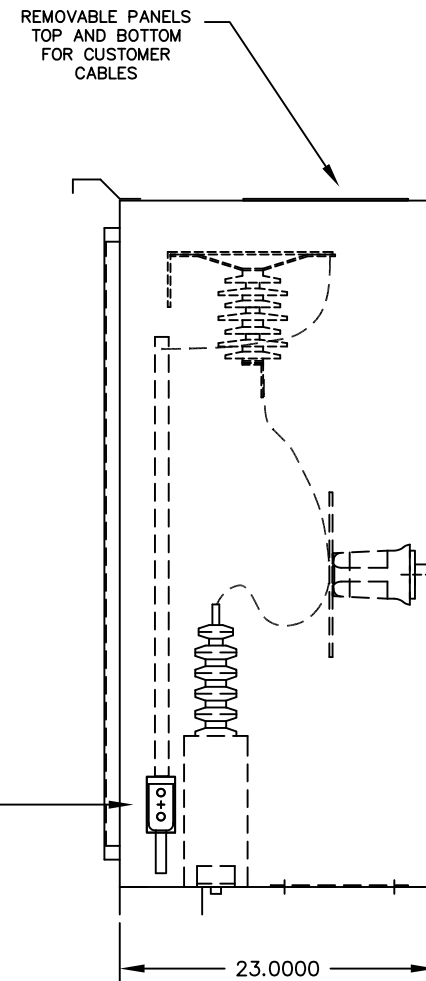


OUTLINE NOTES

- 1) SPECIFICATIONS:
 - A) SURGE PROTECTOR IS FOR USE WITH
 - (1) GENERATOR SET AT 7200 VAC 3PHASE LINE TO LINE. WITH UNGROUNDED NEUTRAL.
 - B) NOMENCLATURE DISCRIPTIONS, IF NOT ON THIS DRAWING (REFER TO LAKE SHORE STANDARD NOMENCLATURE.
 - C) * = CUSTOMER SUPPLIED EQUIPMENT.
- 2) ENCLOSURE CONSTRUCTION:
 - A) NEMA 3R, FREE-STANDING, 11 GA. SHEET METAL WITH 1.5"x4" 7 GA. CHANNEL BASE.
 - B) (1) HINGED FRONT DOOR AND (2) REMOVABLE PANEL(S) IN TOP AND BOTTOM.
 - C) MOUNTING DIMENSIONS ARE ±.125" ALL OTHER DIMENSIONS ARE APPROXIMATE.
- 3) ENCLOSURE FINISH:
 - A) PRIMED AND PAINTED ANSI-61 LIGHT GRAY.



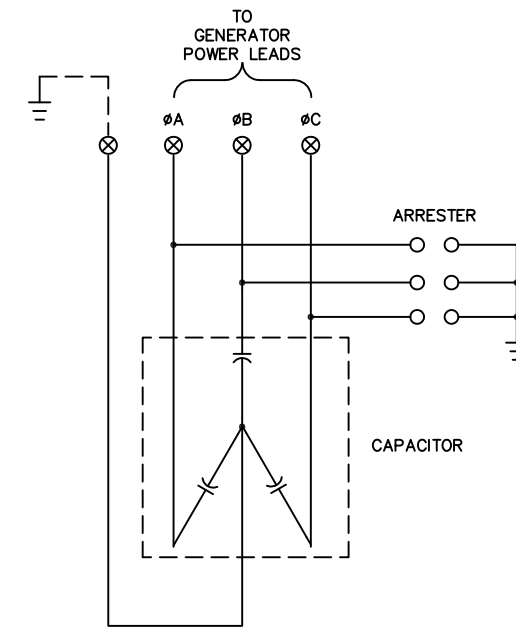
FRONT VIEW



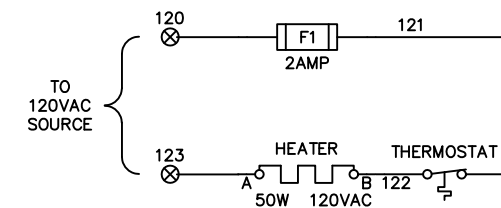
SIDE VIEW


NEMA 2 HOLE PATTERN FOR CUSTOMER CABLE CONNECTIONS FROM TOP OR BOTTOM

COPPER GROUND PAD ON EACH SIDE WITH GROUND LUGS.



CONNECTION DIAGRAM



| | | | | | |
|-----------------------------------------------------------------------------------------------------------------------------------------------|--|------------|-------------|-------------|------|
|  LAKE SHORE ELECTRIC CORPORATION Bedford, Ohio U.S.A. | | REVISIONS | | BY | DATE |
| | | SCALE .1=1 | DATE 040199 | | |
| DR'N DJA | | CK'D | | | |
| AP'VD | | | | | |
| TITLE GENERATOR SURGE PROTECTOR OUTLINE | | | | NO. 60F7200 | |

CUSTOMER